

**Special Design for textile industry**  
**Special design for Smit Sulzer machines**

### FNC 58B PAR



#### Features

- Industry 58 mm standart size, clamping flange
- Robust mechanical and electrical construction
- Protection to IP67
- <1 MHz frequency
- Up to 10 bit parallel output
- Up to 65.536 PPR incremental output
- Optional strobe output for parallel output
- Optional direction change input

#### PPR Options :

1 to 65.536

#### Technical data - electrical ratings

Voltage supply	5VDC to 30VDC
Protection:	Output short circuit protection. Reverse polarity protection ( except 5V version )
Consumption w/o load	≤150 mA (24 VDC)
Resolution (steps/turn)	1...65.536
Reference signal	Zero pulse, width 90° 180°, 360° optional
Optoelectronic life time	100.000 (min)
Output frequency	<1 MHz
Output signals	90° shifted A and B, Z + inverted
Output circuit	Linedriver/RS422 Push-pull short-circuit proof
Interference immunity	DIN EN 61000-6-2
Emitted interference	DIN EN 61000-6-4
Approval	CE

#### Technical data - mechanical design

Dimensions (flange)	Customer specific design
Shaft loading	≤140 N axial ≤240 N radial
Protection DIN EN 60529	IP 67
Operating speed	≤10000 rpm
Starting torque	≤0.025 Nm (IP 67)
Materials	Housing: Aluminium Flange: Aluminium Shaft : Stainless steel
Shaft diameter:	6, 8, 10, 12 mm ( other diameters on request )
Bearings lifetime:	2x10 <sup>9</sup> rev. at 100% of full rated shaft load (minimum)
Operating temperature	-20...+85 °C
Storage temperature	-30 °C up to +90 °C
Weight approx.	350 g

#### Accessories

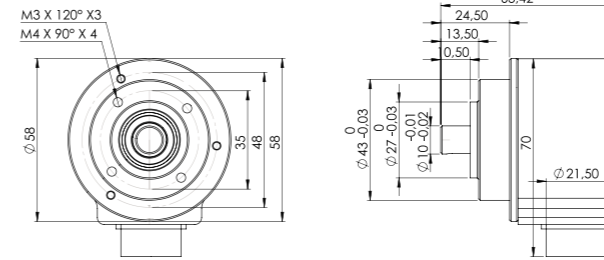
**Connectors and cables**  
CRM2312 M23 12 poles female connector or see page 160

**Mounting coupling**  
PF481010 plastic or see page 158

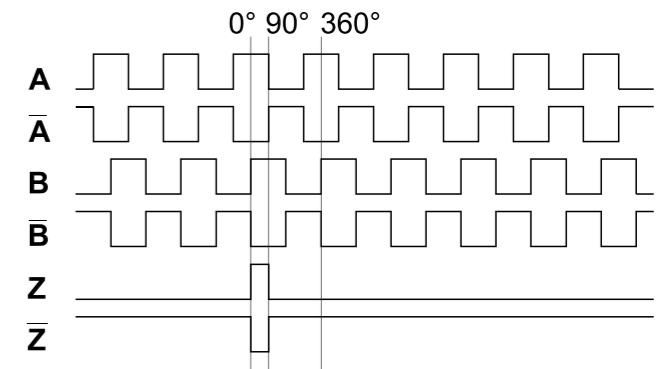
**Mounting accessories**  
SF58B square flange or see page 156-157

### FNC 58B PAR

#### Mechanical Dimensions



#### Pulse Diagram



#### Connector Wiring

Connector Type	+Vcc	GND	A	A'	B	B'	Z	Z'	Shield
CRM1204	1	2	3		4				o.r.
CRM1205	1	2	3		4		5		o.r.
CRM1208	1	2	3	6	4	7	5	8	o.r.
CRM1212	1	2	3	6	4	7	5	8	o.r.
CRM1607	1	2	3		4		5		o.r.
CRM1614	Customer Specific								o.r.
CRM2312R	2-12	10-11	5	6	8	1	3	4	o.r.
CRM2312L	2-12	10-11	5	6	8	1	3	4	o.r.

For further information please see page 64

#### Cable Wiring

Function	Color	Renk	Explanation
+VB	Brown	Kahve	Supply Voltage
GND	White	Beyaz	Ground
A	Green	Yeşil	A Channel
A'	Red	Kırmızı	A Inverted Channel
B	Yellow	Sarı	B Channel
B'	Pink	Pembe	B Inverted Channel
Z	Gray	Gri	Z Channel
Z'	Blue	Mavi	Z Inverted Channel
Shield	Black	Siyah	Shield

#### Encoder Part Number

### FNC 58B - PAR